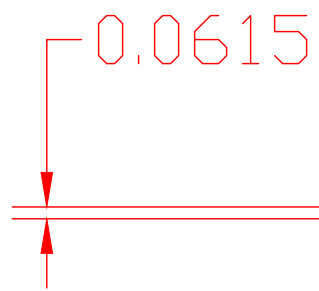
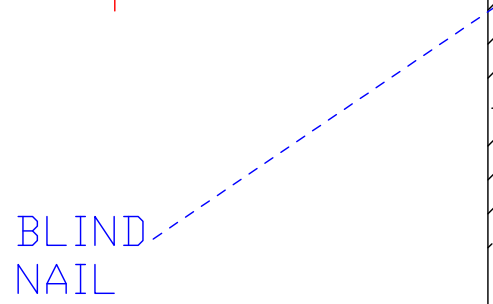


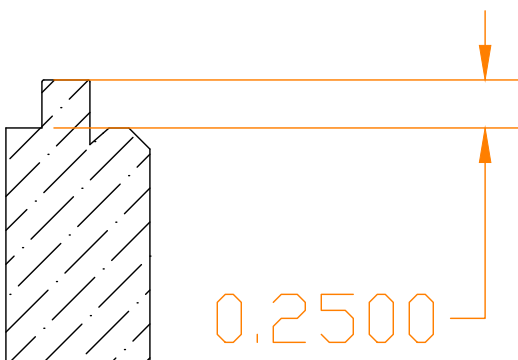
GAP $\frac{1}{16}$ "
DURING
INSTALLATION
FOR
EXPANSION



BLIND
NAIL

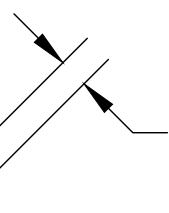


0.2500



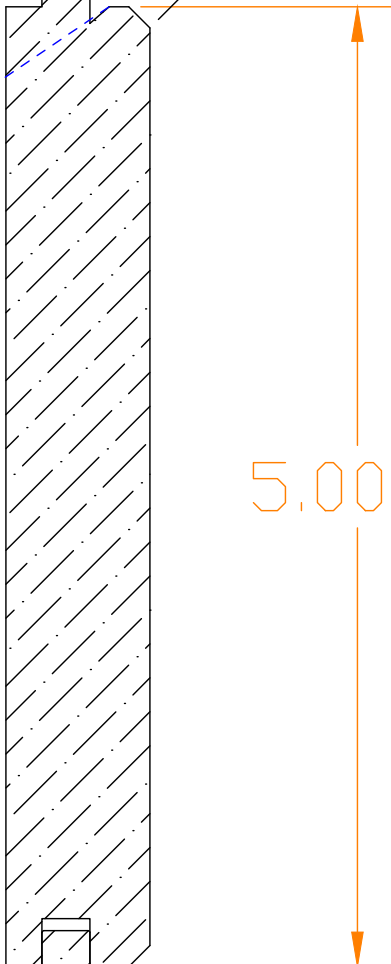
BEVEL

0.1556

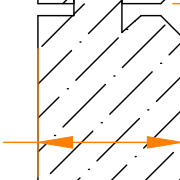


ADJUSTABLE
FACE WIDTH

5.0000



0.7500



ROOT RIVER HARDWOODS
RR 530
SCALE: 1'-0"=1'-0"